

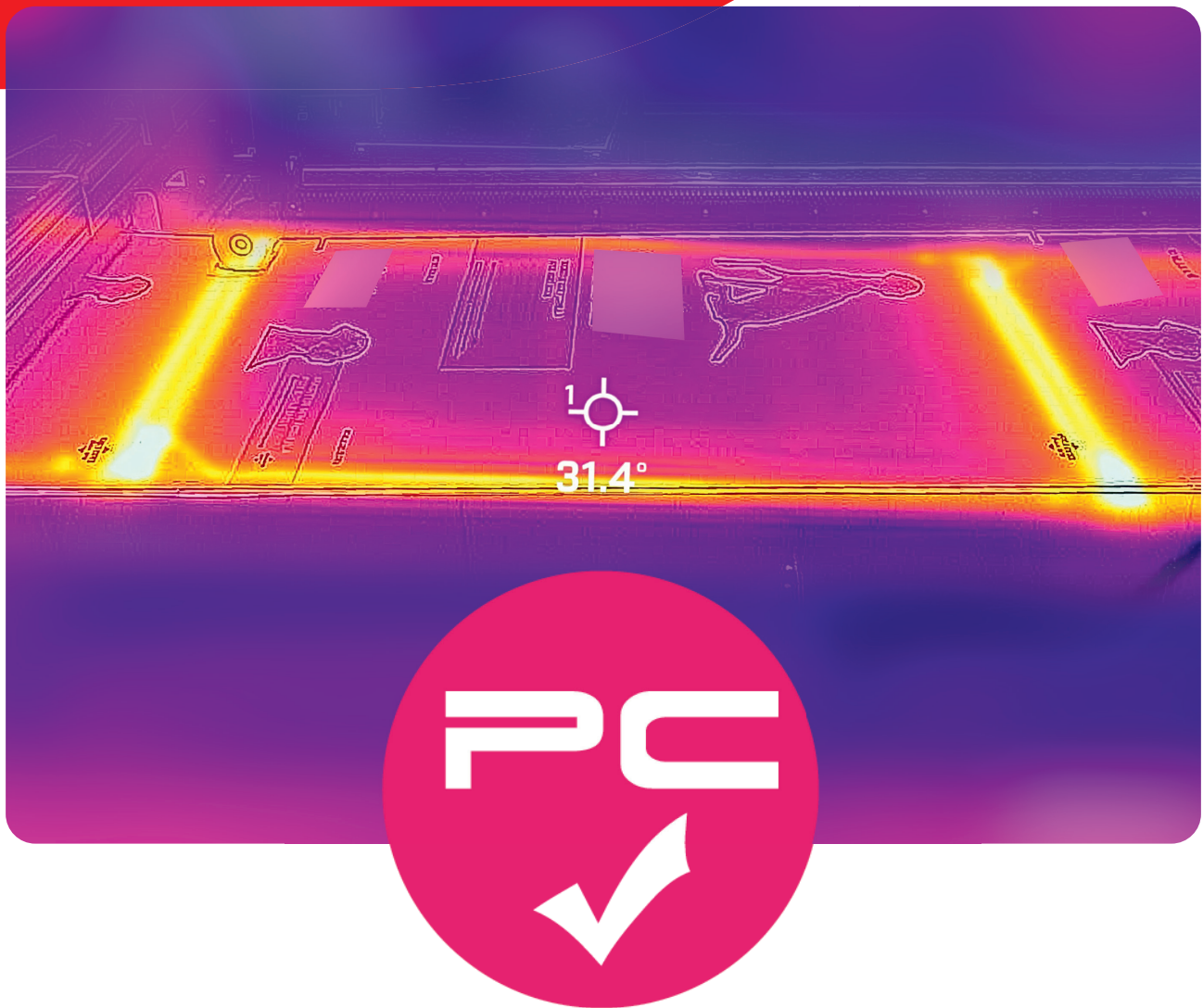
BW Converting

barrywehmiller
bw
betterworld

Change for the better

CLEARVISION
VALCO MELTON

BW Converting has partnered with Valco Melton® to provide ClearVision's patented* PouchChek technology



POUCHCHEK

See the invisible! Reveal hidden seal defects before they become failures.

*Patents issued in the following countries: US, Poland, Czech Republic, Netherlands, Germany, Great Britain, Norway, Italy, France, Belgium, Sweden and Spain

HUDSON-SHARP

PouchChek

Comprehensive inspection, not just spot checks

PouchChek is a powerful, fully-integrated inspection system for heat-sealed packaging that delivers confidence in every seal. Using patented dual thermal and visual imaging, it reveals defects invisible to the naked eye so you can stop quality issues before they become costly failures.

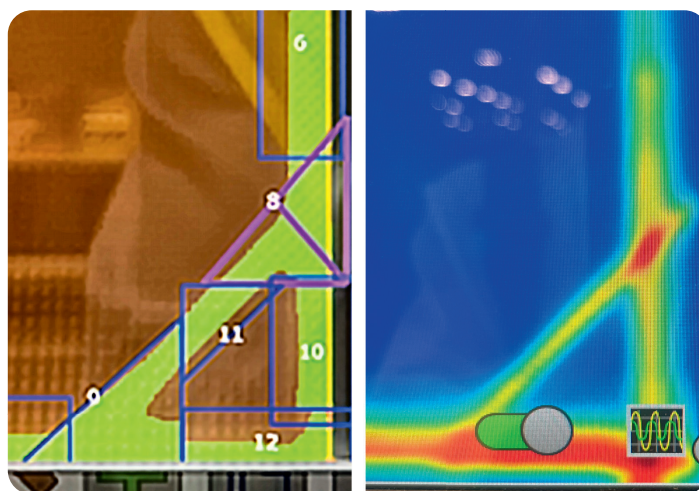
By capturing and overlaying real-time images on a large screen, PouchChek gives operators instant clarity, eliminating guesswork and ensuring consistent, high-quality output.

Designed for speed and precision

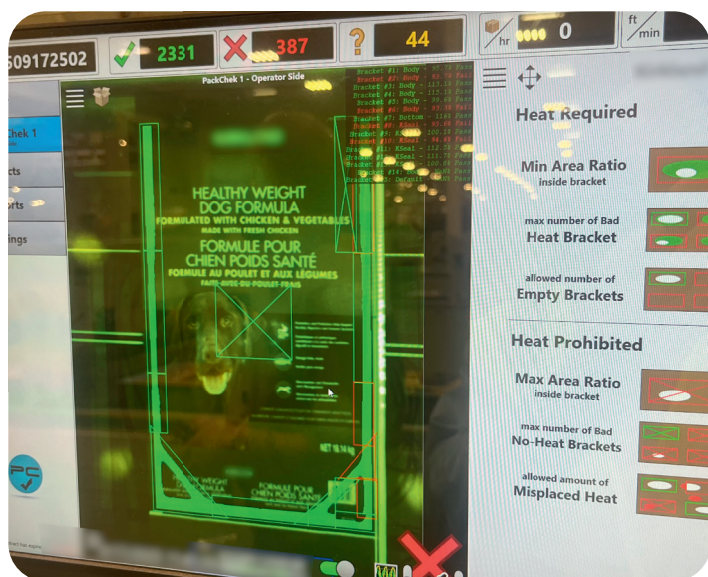
- Inspects 100% of packages at full production speeds
- Automatically compares thermal patterns against defined quality parameters
- Customizable alerts streamline defect management
- Real-time imaging helps operators quickly optimize process settings
- Instantly identifies defects such as improper heat zones, misalignment, or debris contamination
- Rejects faulty packages in real time
- Expandable with additional cameras for comprehensive package inspection



Fully-integrated system for new Hudson-Sharp machines or existing production lines



Dual inspection via thermal and visual imaging for confidence in critical seal areas



Multiple inspection data points allow for quick adjustments

Turns quality control into a proactive, data-driven advantage

PouchChek's built-in defect management, image storage, and process logging gives you traceability and production process insights.

- Helps reduce downtime and continuously improve performance
- Prevents recalls, reduces waste, and ensures consistent product quality
- Smart quality control that protects brand integrity and your bottom line

