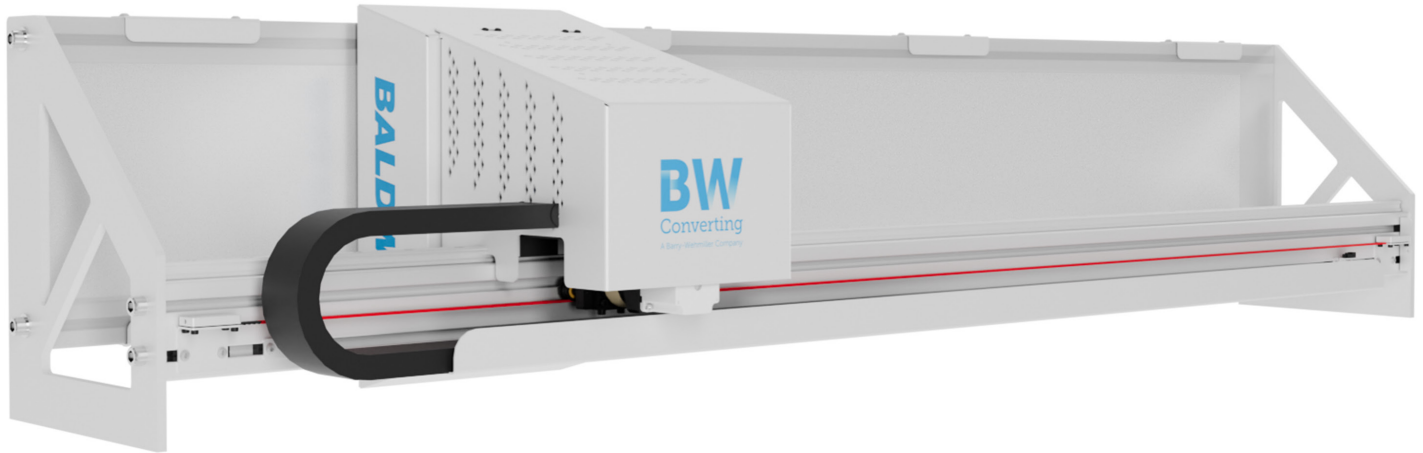


# BW Converting

Change for the better

barrywehmiller  
**bw**  
betterworld



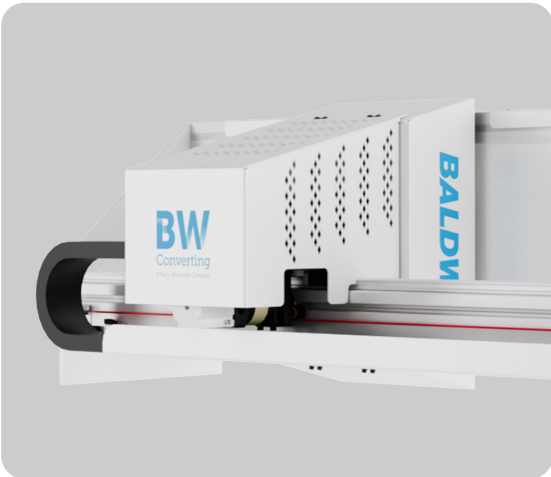
# Defender<sup>®</sup> View

Easy, Smart, and Future-proof  
Web Monitoring for the Print Industry

**Optimized UX:** Defender<sup>®</sup> View is designed to the latest UX/UI standards making it incredibly simple to learn and use. It offers fast responsiveness and navigation making it highly efficient to use.

**BALDWIN<sup>®</sup>**

# Specifications



User Interface:	24" Multi-touch, gesture driven
Cameras:	High resolution CMOS
Lighting:	High performance LED
Substrates:	Opaque, transparent, and highly reflecting
Field of View (min):	30 mm x 21.5 mm
Field of View (max):	230 mm x 167 mm
Traverse Width Range:	1000 mm to 2800 mm
Maximum Operating Speed:	700 m/min
Power:	120 – 240 VAC / 3.8 A at 120 VAC, 2.0 A at 230 VAC

# Benefits

- Best-in-class:** Defender® View has been designed to the latest UX/UI standards making it incredibly simple to learn and use. It offers fast responsiveness and navigation making it highly efficient to use.
- Future-proof:** Being the most modern web viewer on the market, the Defender View utilizes state-of-the-art cameras and LED lighting technology. The system offers color and distortion correction as standard, ensuring images are vivid and faithful to your printed product.
- Easy to Retrofit:** Defender View has a very compact form factor, making it ideal for retrofits. Due to its modern architecture, it delivers the same field of view with only a fraction of the space required by traditional viewers.
- Wide Application Support:** Defender View supports imaging of all typical packaging print applications as well as many more niche applications such as UV and IR illumination or advanced image analysis like Delta-E color monitoring and Barcode Grading.
- Sampled Inspection:** Leveraging our decades of 100% inspection know-how, Defender View is the smartest viewer on the market. It has an extensive range of inspection algorithms that can detect and classify many common print defects to help drive quality and process improvements.

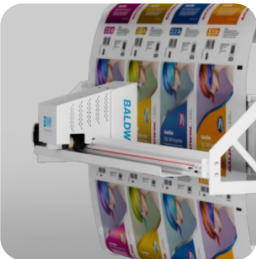
# Features



Standalone product



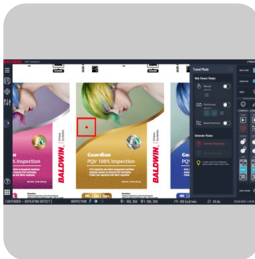
Enhances Defender 100%



Compact, with large field of view



Multiple configurations



Operators get real-time insights