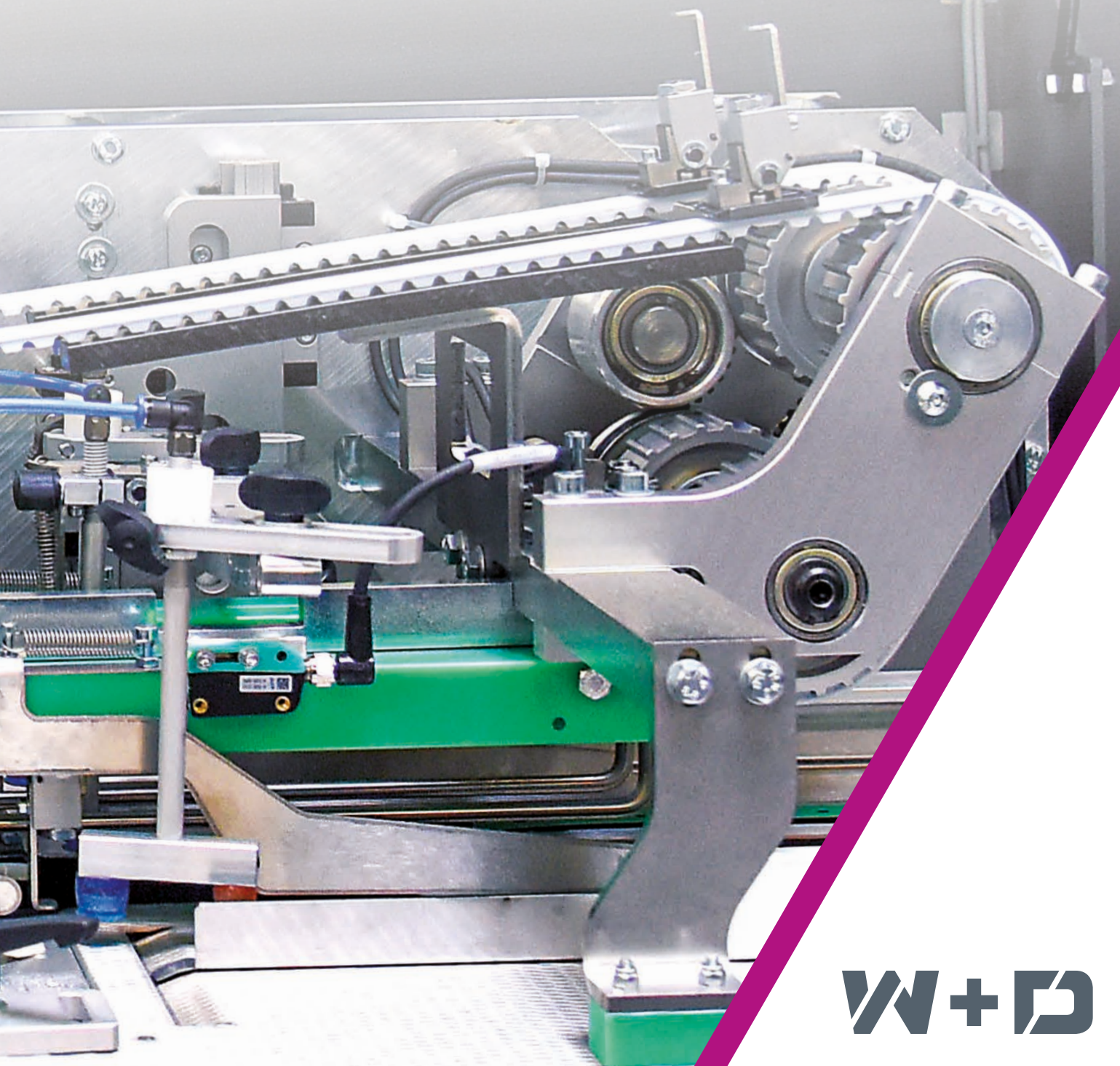


W+D BB816+

The next generation



W+D

The next generation highly productive inserting systems

Succeeding our well-known BB700 the **W+D BB816+** again takes productivity, integrity, reliability and user-friendliness to a new level. The 16k system brings forward the advanced features introduced with the 800 system platform as a inserting module with 3-up insert pusher assembly, AutoSet capability for the envelope stopper unit plus enhanced product control with new envelope feeder, additional vacuum systems and with a new envelope gripper track for further improved production consistency and reduced wear.

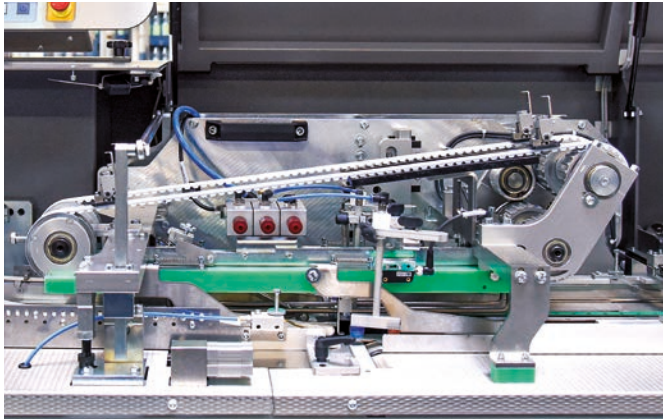
The **W+D BB816+** features increased ease of use with EasySet and the BSC4.0 operating system now with onboard operator support.



Reasons to buy the W+D BB816+

- / A future-proof investment due to its modular design, allowing the machine to be adapted to changing market demand.
- / Flexible use of a wide variety of feeder technologies enables even the most unusual inserts to be processed.
- / Modern servo technology combined with EasySet for rapid make ready and machine changeovers.
- / Proven technology in paper handling and processing ensures high net output even with difficult materials.
- / Various camera reading positions guarantee high flexibility and the integrity of the mail pieces with options for image archiving, too.
- / Auto Mismatch Recovery (patented) included for intelligent error compensation thereby providing for max. integrity and productivity when processing multiple personalized mailings.
- / Online operator support boosts ease of use and quick make ready for less skilled / newly trained skilled or newly trained operators.
- / Robust design allows inserting of express or cardboard envelopes (FedEx, DHL, UPS, USPS, etc.) as well as USPS TED-C envelopes.

The W+D BB816+ brings two worlds together, direct mail and transactional mail. Reliable processing of important documents from the feeder, from the cut sheet channel or from a continuous roll in-feed is just as much a part of the W+D BB816+'s range of services as processing unusual advertising supplements. From the inline affixing of customer cards to inline personalization, processing of insurance policies with variable thickness or special applications such as photos of different sizes and quantity – almost no material is too difficult for the W+D BB816+ to handle.



Inserting section

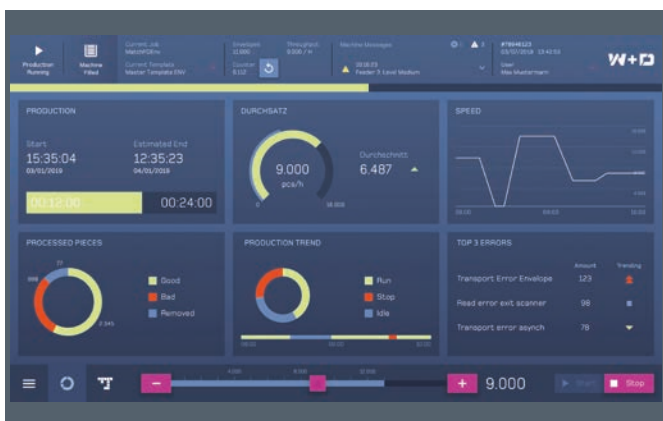
Standard components

- / BB816+ inserting module with further enhanced product control
- / Gathering section, base unit, with 6 or 8 stations
- / BSC 4.0 HMI and operating system with onboard operator support
- / EasySet functionality for rapid make ready
- / Network interface incl. job report to the network
- / High-performance software package
- / Batch feed function
- / Auto Mismatch Recovery (patented)
- / Envelope autoloader
- / Vacuum sealing section with integrated eject gate
- / Delivery belt
- / Integrated jam sensors in the gathering section and inserting module
- / Router for remote support (ExpertOnline)

BSC4.0-HMI and advanced operating system

The W+D BB816+'s new graphical 22 inch touch panel allows intuitive and easy to learn machine operation. The production cockpit displays all key production data at all times. Work progress and the remaining time for the current job are displayed graphically and numerically, as well the number of diverted products and good pieces on the belt.

The onboard operator support will facilitate a quick error recovery even for lesser qualified operators.



BSC4.0 production cockpit



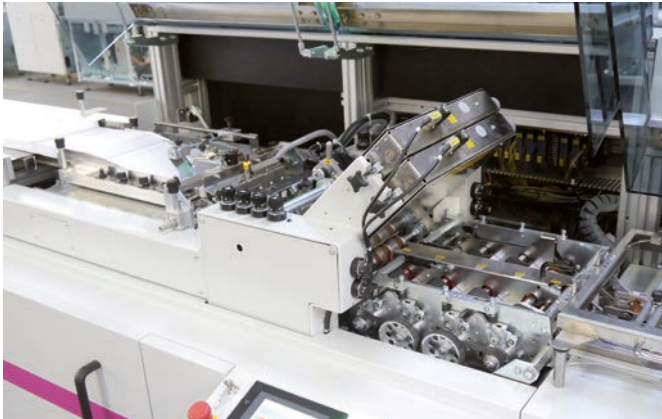
Envelope autoloader

Optional components

- / Broad feeder portfolio to handle the widest product range
- / Gathering section extension units to a max of 24 pockets
- / Intelligent cut sheet or 2up-continuous/roll input channels
- / SL2 autoloader for various feeder models in any feeder position
- / Vertical delivery OC4, PT4 postal tray loading
- / Multiple reading and camera options
- / Various printing solutions (incl. UV) on the gathering section or after the sealing section
- / Various post insertion modules such as a turnover belt, mail table, postage meter, label dispenser etc. after the sealing section
- / Interfaces for third-party systems, like cameras, printers, stamper affixers, label affixers, NFC tag affixers, card affixers, etc.
- / Output reading in the sealing section
- / Mail sort kicker or edge marker for tray brakes
- / File Based Inserting (FBI) and Closed Loop Integrated Processing (CLIP) with generation of a data file with mail piece ID, time stamp and a reprint file (supported with hand scanner, too)
- / The W+D Feeder-Carrier or Feeder Lift supports the handling and swapping of feeders on a system or between systems
- / The user interface is optionally supplemented by a mobile tablet that mirrors the HMI and supports camera settings locally at the feeder



Sealing section



Heavy duty cut sheet channel

Gathering Section

The base configuration of a BB816+ includes as standard either a six or an eight pocket gathering section. The base configuration may be expanded by 4, 6 or 8-feeder modules to a maximum configuration of 24 pockets. The gathering section features a dual lug chain for secure and registered travel of inserts. Also, side rails are easily and quickly adjusted via hand wheel and worm gears for fast change overs.

Powerful input channels

Intelligent front ends, whether cut sheet feeder/folders or 2up-roll infeeds, are a requirement when running (transactional) applications with varying sheet counts or simply are to increase the efficiency of your overall operations as they allow to bypass the bindery. Scalable solutions are available on the BB816+ to meet your applications and volumes.

Autoloader SL2

The W+D SL2 shingle autoloader will support all W+D feeder types as such as rotary, friction, shuttle and catalog feeders. Positioned 90° to the track several of the mobile units can be employed on a single system. The SL2 Autoloader substantially reduces the feeder loading frequency. Furthermore, a constant fill level in the feeder ensures trouble-free operation and increases efficiency and output.



Autoloader SL2



High-performance 2-up continuous input channel

Vertical delivery OC4

Especially at high speeds, "upright" product delivery is an invaluable advantage. The OC4 is the only vertical delivery solution that will reliably also handle 9 x 12" applications. The capacity of the vertical stacker is a multiple of a shingle conveyor, resulting in a dramatically reduced clearing frequency and effort-resulting in a substantially increased operator and system productivity. A kicker for a physical offset on a ZIP or tray break is a standard component of the OC4.

Tray assist PT4

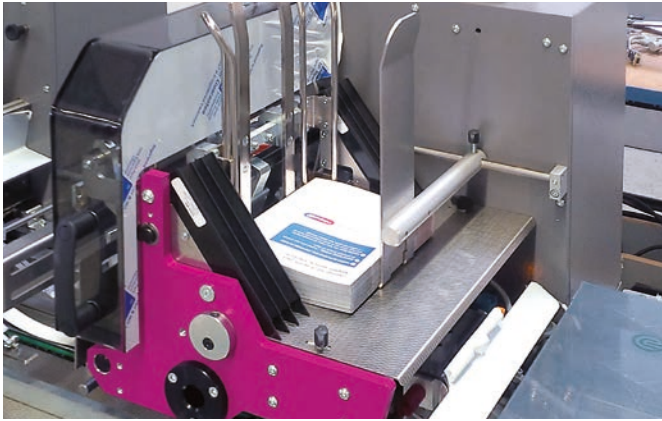
The postal tray loading capability of the W+D PT4 is a complement to the W+D OC4. Envelopes for a tray, offset on the OC4, will be ergonomically dropped into the postal tray or box, by a bomb bay gate.

W+D Feeder Lift

The W+D Feeder Lift or Feeder Carrier facilitates the quick, easy and ergonomic swapping of feeders by a single operator or engineer, as the modularity of W+D inserters allows the machines to be "configured to job", meaning feeder positioning and sequence on a system can easily be adapted and feeders can be shared between systems.



Automated delivery solution with OC4 and PT4



Rotary feeder RF2

Feeder

Servo drive technology and true modularity are characteristic features of the W+D BB816+ and its functional components – an advantage that is particularly noticeable with the feeders. Thanks to the possibility of free positioning and quick and easy swap between feeder types, the BB816+ is highly flexible and can be equipped for almost any task.

Rotary feeder RF 2

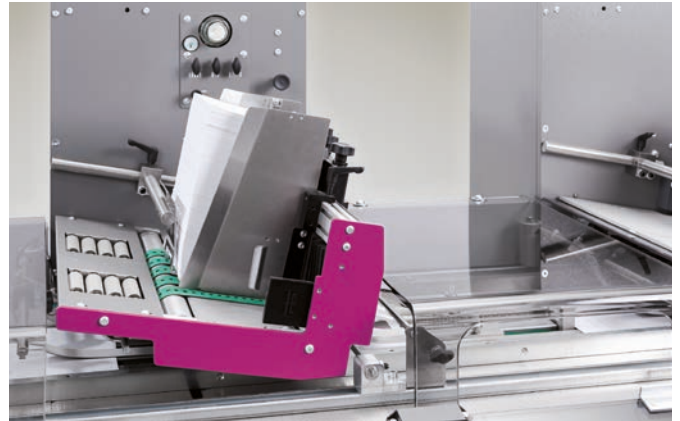
The W+D RF2 rotary feeder processes single flat sheets, C-folded documents and brochures with the closed edge leading and a max thickness of 3 mm or 1/8". With an "open edge" or "Italian fold" attachment it will also handle folded pieces with the closed edge parallel to the feed direction. With the 90° kit the turned feeder will also handle brochures with the stitched edge in running/feeding direction. A "left hand" version or "revers" RF2 will feed the product closed edge leading against the running direction of the track.

Friction feeder HF 2

The W+D HF2 is designed for processing a wide variety of inserts products with an open edge in the running direction, such as Z-folded single sheets, thicker brochures and rigid products that cannot be processed via a rotary feeder.



Shuttle feeder SF2



Hybrid feeder HF2

Shuttle feeder SF 2

With oscillating base plate with rear pusher and front vacuum segment the SF2 securely feeds thicker brochures or perfect bound books.

Pick and place feeder

The perfect feeder for the precise placement of credit or loyalty cards, luggage tags, membership cards or coins, etc.

Catalog feeder CF 2

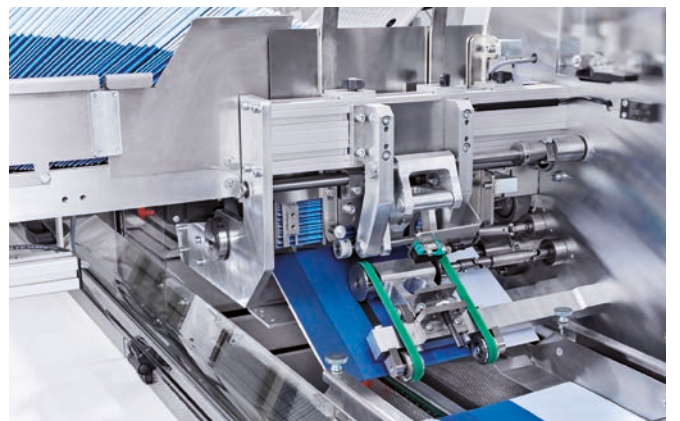
The W+D CF2 catalog feeder is a special feeder ideally designed for reliable processing of brochures in the formats A5-A4 with variable thicknesses of 1-10 mm ($\frac{1}{25}$ " - $\frac{4}{10}$ ").

Vacuum transport on the gathering section

The modular vacuum conveyor on the gathering section allows inline personalization/printing or affixing of cards, coins, tags, note pads etc. at high running speeds and with high precision and offers the possibility of camera verification on the unit. The unit is offered with and w/o a registration section.

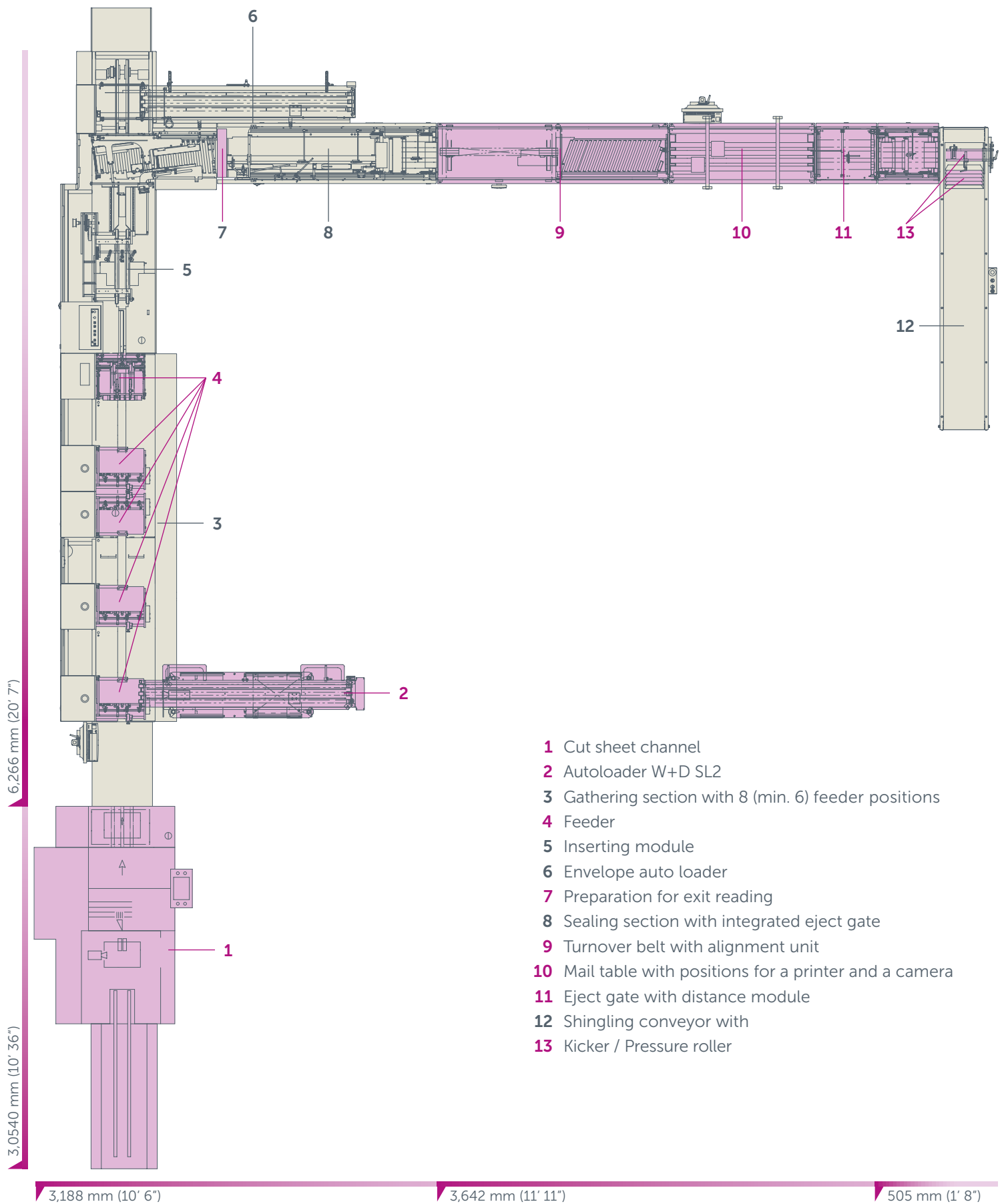
Turnover belt on the gathering section

A turnover belt on the gathering section is also available where inline affixing or printing applications requires a change in product orientation.



Catalog feeder CF2

Machine layout



Technical Specifications

Type		BB816+
Mechanical performance		max. 16,000 p/h throughout the size range ❶
Envelope		
Size	min.	95 × 162 mm (3 3/4" × 6 3/8") ❷
	max.	254 × 353 mm (10" × 13 7/8")
Seal flap (Height)	min.	19 mm (3/4")
	max.	63 mm (2 1/2")
Paper weight	min.	75 g/m² (20 lbs)
	max.	150 g/m² (40 lbs) ❸
Thickness	max.	max. 15 mm (6/10")
Insert		
Paper weight	min.	70 g/m² (19 lbs)
	max.	250 g/m² (64 lbs)
Max. Product thickness	RF2	3 mm (1/8")
	HF2	15 mm (6/10")
	SF2	15 mm (6/10")
Min. Product thickness	RF2	Single sheet 70 g/m² (19 lbs)
	HF2	Single sheet folded 70 g/m² (19 lbs) resp. 110 g/m² (29 lbs) unfolded Single sheet unfolded < 110 g/m² (29 lbs) on request
	SF2	1 mm (1 1/25") 160 g/m² (43 lbs) – optional with additional ejector
Loading capacity of the feeders	RF2	max. 300 mm (12")
	HF2	max. 250 mm (10")
	SF2	max. 250 mm (10")
Clearance Insert - Envelope		min. 3 mm (+1/8") both sides, > 5 mm (1/4") total respectively depending on filling thickness
Machine		
Length	Basic 6 Feeders	5,110 mm (16.8 ft)
	Extension per 2 feeders	770 mm extra (2.6 ft)
Number of Feeder	min.	6 Stations
	max.	24 Stations
Compressed air requirement with RF2 feeder	6 feeders 7 bar	630 NL/min
	each 2 feeders 6 bar	110 NL/min
Power requirements		400V/230V 3AC/N/PE 50/60Hz (other executions on request)
Distance of guides in the gathering section		148 mm (5 3/4") in versions without system channel 210 mm (8 1/4") in versions with system channel
Modularity		6-station or 8-station feeder basis Expandable with 4-station, 6-station or 8-station feeder basis (max 24 feeders) Standard configuration right/right

❶ reduced to 10,000 p/h with filling thickness >10 mm (4/10")

❷ with small format kit

❸ heavier stock and Cardboard Express Mail Envelopes on request

All performance data published refers to the production of a defined reference product under certain circumstances reflecting a possible practice of use. The performances achieved in practice depend on a multitude of parameters which are beyond our control. This includes, amongst other factors, the condition of the raw materials to be processed, the shapes of the products, the air humidity and the ambient temperature. W+D reserves the right to make design changes and changes to the performance values.

Winkler+Dünnebier GmbH (W+D), part of global equipment manufacturer Barry-Wehmiller and its BW Converting Solutions platform of five industry leading brands, specializes in the design and manufacture of high-performance converting machinery for the tissue, nonwovens, hygiene, package-printing and bag-converting industries worldwide.

With more than 100 years of experience, W+D is the only engineering company to cover the entire envelope mail production value chain: from converting, printing and value ad enhancement systems for the manufacturing of envelopes to highly intelligent mail inserting technology. All with the aim to produce the most complex and personalized letter mail packages for postal system intake.

For more about W+D, visit w-d.de.

Locations

Winkler+Dünnebier GmbH

Sohler Weg 65
56564 Neuwied · Germany
t. +49 2631 840
info@w-d.de

W+D North America Inc.

11300 West 80th Street
Lenexa, KS 66214 · USA
t. +1 913 4929880
info@wdnorthamerica.com

Winkler+Dünnebier GmbH

Standort Bad Oeynhausen
Valdorfer Strasse 3
32545 Bad Oeynhausen · Germany
t. +49 5731 7440
info.ins@w-d.de

BW Converting Solutions



ONE Global Team - Better Together



www.w-d.de